



exxent

Furniture

FOR PROFESSIONAL USE

exxent

**Creating the best conditions
for a unique dining experience.**

Professional · Functional · Timeless
High-quality products developed to meet the
requirements of professional environments.



ROCKLESS TABLE

Ensuring total stability on all surfaces.

Innovative · Self-stabilising · Carefree
Technology-leading table bases developed
to ensure stability on challenging surfaces.

werzalit
since 1923

**Delivering world-leading quality
for demanding surfaces.**

Weather-resistant · Scratch-resistant · Durable
High-quality, moulded table tops designed to
withstand all types of climates and environments.

Xirbi

**Offering sustainable design
for outdoor environments.**

Hard-wearing · Trend-conscious · Manageable
Quality furniture designed for the tough
requirements of public environments.



Contents

Seating..... p.5

Chairs · Armchairs · Sofas · Stools

Table tops..... p.12

Compact laminate · Laminate

Table bases..... p.14

Self-stabilising · Folding

Entrance equipment..... p.18

Barrier post · Coloured ropes





Seating

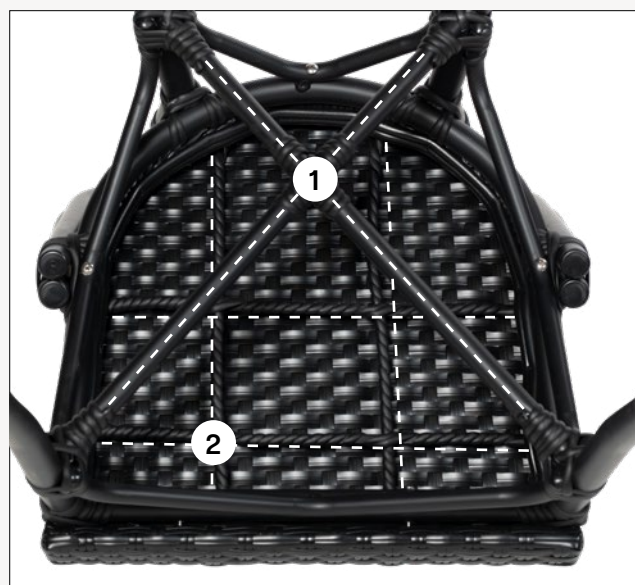
Varied seating for all tastes.

The seating range includes chairs, armchairs, sofas and stools. Create variety and maximise the number of seats as required. All seating models are fitted with one or more reinforcements to ensure long-term durability.

Reinforcements

Cross-reinforcement (1): The frame features a cross-brace providing extra support and stability, extending its lifespan.

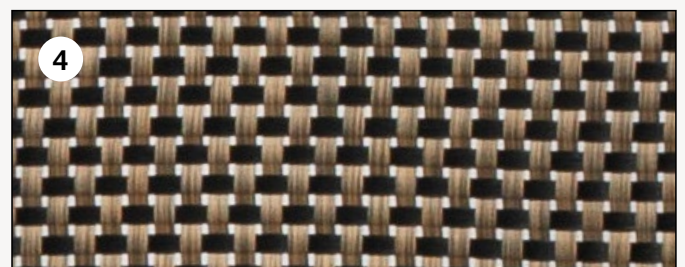
Woven reinforcement (2): The underside of the seat features a woven reinforcement for extra durability and better support, providing a more comfortable seating experience.



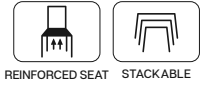
Materials

Synthetic rattan (3): Offers a natural appearance and is resistant to external stresses such as weather, dirt and sun fading.

Texteline (4): A hard-wearing and UV-treated synthetic fabric. Easy to clean and extremely resistant to stresses such as mould, dirt and sun fading.



NANTES



Modern and comfortable series in two models.

A neat series of seating with rounded backrests for optimal comfort, available as both a classic chair and a comfortable armchair.

The chairs are constructed with a Ø 25 mm brown-lacquered aluminium frame for low weight and easy handling. Seats and backrests are upholstered in durable synthetic rattan with a rope-like texture, providing a natural and rustic impression.

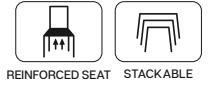


Size: L62 x W52 x H80 cm
 Seat H: 45 cm
 Colour: Brown wood-look | Brown/nature
 Art.no: 78686

Size: L62 x W56 x H82 cm
 Seat H: 45 cm
 Colour: Brown wood-look | Brown/nature
 Art.no: 78684 - **NEW**



PARIS

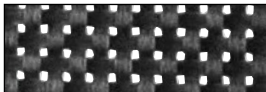


One of the most iconic series on the market.

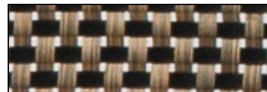
A classic choice for cafes and restaurants. Timeless and functional, whether choosing the chair, armchair, stool or sofa. All models are built with a Ø 28 mm aluminium frame. Seats and backs are available in various colour combinations in either texteline or synthetic rattan.



Size: L58 x W48 x H88 cm
Seat H: 46 cm
Colour: Black | Black
Art.no: 78578



Size: L58 x W48 x H88 cm
Seat H: 46 cm
Colour: Brown | Black/brown
Art.no: 78577



Size: L56 x W47 x H88 cm
Seat H: 46 cm
Colour: Black | Black
Art.no: 78626

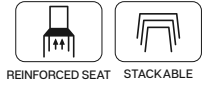


Size: L56 x W47 x H88 cm
Seat H: 46 cm
Colour: Nature | Burgundy/creme
Art.no: 78667



Size: L56 x W47 x H88 cm
Seat H: 46 cm
Colour: Nature | Green/creme
Art.no: 78666





Size: Ø 47 cm
Seat H: 75 cm, high
Colour: Nature | Creme
Art.no: 78662 - **NEW**

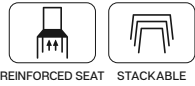
Size: Ø 37 cm
Seat H: 45 cm, low
Colour: Nature | Creme
Art.no: 78663 - **NEW**



Size: L56 x W112 x H88 cm
Seat H: 46 cm
Colour: Nature | Green/creme
Art.no: 78661 - **NEW**



MENTON



A cost-effective alternative.

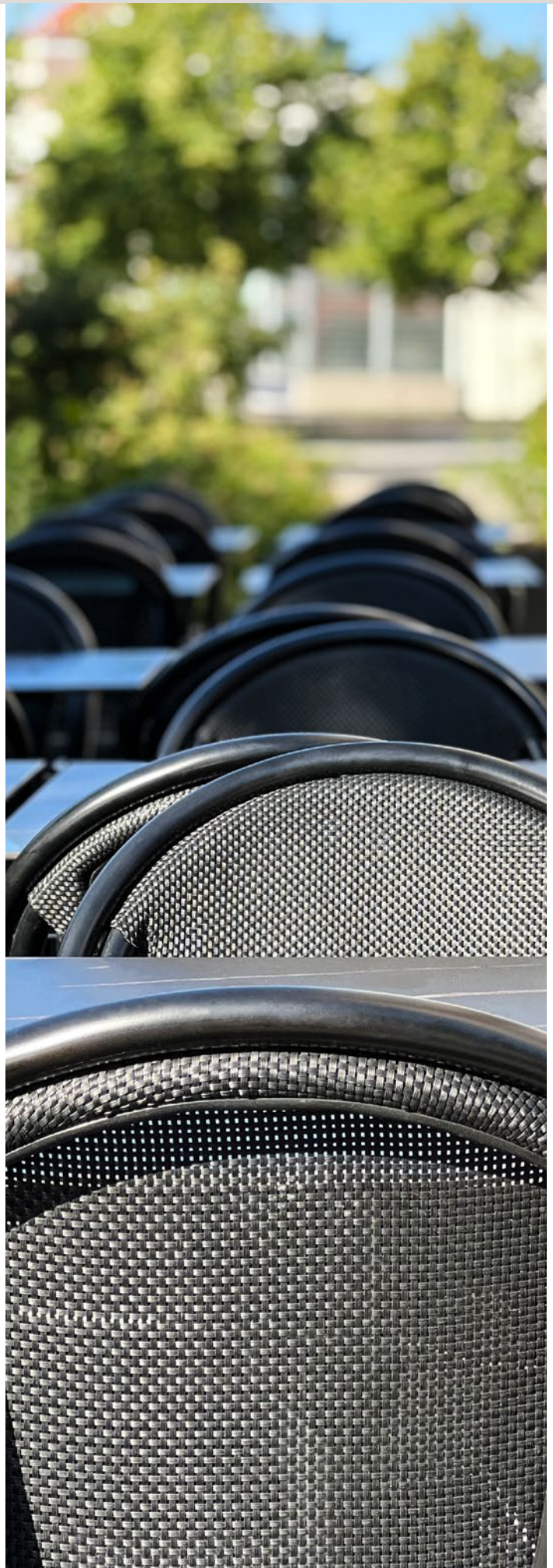
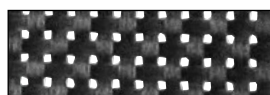
Menton offers value without compromising on quality or durability. Features a Ø 28 mm aluminium frame with a reinforced texteline seat.



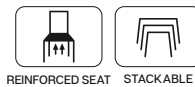
Size: L54 x W47 x H86 cm
 Seat H: 46 cm
 Colour: Brown | Brown/nature
 Art.no: 78685



Size: L54 x W47 x H86 cm
 Seat H: 46 cm
 Colour: Black | Black
 Art.no: 78659



MONACO



A comfortable armchair providing support for the back and arms.

Constructed with a Ø 28 mm aluminium frame for low weight and easy handling.

Seats and backs are made of either synthetic rattan or texteline.



Size: L58 x W57 x H82 cm
Seat H: 46 cm
Colour: Nature | Green/creme
Art.no: 78909



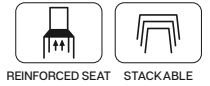
Size: L58 x W57 x H82 cm
Seat H: 46 cm
Colour: Brown | Brown/nature
Art.no: 78658



Size: L58 x W57 x H82 cm
Seat H: 46 cm
Colour: Brown | Black/brown
Art.no: 78576



ALU-BISTRO



A woven armchair in synthetic rattan.

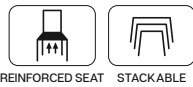
Stackable armchair for cafes and outdoor dining. Manufactured in reinforced synthetic rattan with a 4 mm steel wire core for extra durability. Stable frame made of 30 mm aluminium tubing. Classic design combining low weight with high durability.

Size: L59 x W55 x H76 cm
 Seat H: 45 cm
 Colour: Aluminium | Black
 Art.no: 78153



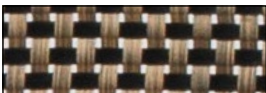
exxent

RENNES

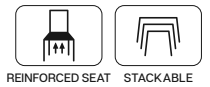


Timeless chair with an aluminium frame and texteline seat featuring cross and woven reinforcement.

Size: L58 x W43 x H88 cm
 Seat H: 45 cm
 Colour: Brown | Black/brown
 Art.no: 78574 - **DISCONTINUED**



CALAIS

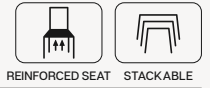


Light bistro chair with a Ø 28 mm bamboo-look aluminium frame. Light synthetic rattan seat with double reinforcement.

Size: L56 x W47 x H88 cm
 Seat H: 46 cm
 Colour: Bamboo-look | Creme
 Art.no: 78668 - **DISCONTINUED**



GRASSE BAR STOOL



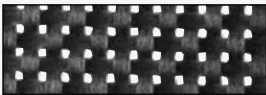
Maximise seating for restaurant guests.

Bar stools provide a simple, cost-effective solution for creating additional seating. Suitable for placement along walls, in corners or at the bar, both indoors and outdoors. Constructed with a \varnothing 28 mm black-lacquered aluminium frame and a comfortable footrest.

Reinforced texteline seat.

*Pictured: Bar stool 78594,
table top 78934,
table base 78590.*

Size: L47 x W47 x H75 cm
Seat H: 75 cm
Colour: Black | Black
Art.no: 78594



1. Aluminium cross-reinforcement for extra stability.
2. Woven reinforced texteline seat to ensure a comfortable seating experience.

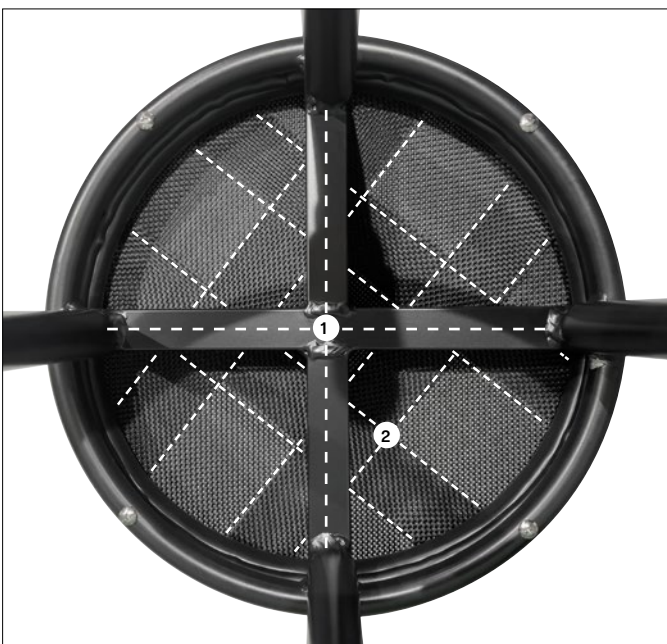


Table tops



WEATHER-RESISTANT



HEAT/UV-RESISTANT



EASY TO CLEAN

Durable surfaces for professional use in all environments.

Compact laminate and moulded laminate tops guarantee high durability and minimal maintenance. Exxent's range is adapted for use both indoors and outdoors.



Moulded laminate tops guarantee high durability and minimal maintenance. Suitable for both indoor and outdoor use. Produced by pressing dried wood under extremely high pressure into a homogeneous core, resulting in a seamless surface resistant to moisture, heat and wear.



MARBLE BISTRO

Size	Thickness	Art.no
Ø 60 cm med kantlist	26 mm	78902



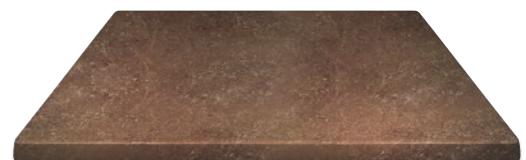
MARBLE

Size	Thickness	Art.no
60x60 cm	35 mm	78830
70x70 cm	35 mm	78046
110x70 cm	35 mm	78055
Ø 60 cm	26 mm	78829



CITY

Size	Thickness	Art.no
60x60 cm	35 mm	78827
70x70 cm	35 mm	78825
110x70 cm	35 mm	78100
Ø 60 cm	26 mm	78828
Ø 70 cm	26 mm	78826



FACTORY

Size	Thickness	Art.no
60x60 cm	35 mm	78689
70x70 cm	35 mm	78688
110x70 cm	35 mm	78687
Ø 60 cm	26 mm	78690

Compact laminate is one of the strongest materials available among wood-based products. Despite a profile of only 10 mm, the table top significantly exceeds much thicker standard alternatives in strength. The lifelike decor provides an authentic visual finish, combined with the superior resistance of compact laminate to stains and wear.

Products marked with * are made-to-order. Contact your sales representative from Exxent for more information regarding availability and delivery.



BALTIC BROWN

NEW

Size	Thickness	Art.no
59x59 cm	10 mm	78990 *
69x69 cm	10 mm	78991 *
69x59 cm	10 mm	78992
110x69 cm	10 mm	78993 *
Ø 59 cm	10 mm	78994 *
Ø 69 cm	10 mm	78996 *



HERITAGE OAK

NEW

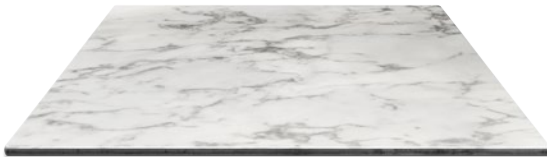
Size	Thickness	Art.no
59x59 cm	10 mm	78940
69x69 cm	10 mm	78941
69x59 cm	10 mm	78942
110x69 cm	10 mm	78943 *
Ø 59 cm	10 mm	78944
Ø 69 cm	10 mm	78945 *



SMOKED OAK

NEW

Size	Thickness	Art.no
59x59 cm	10 mm	78970 *
69x69 cm	10 mm	78971
69x59 cm	10 mm	78972
110x69 cm	10 mm	78973
Ø 59 cm	10 mm	78974
Ø 69 cm	10 mm	78975 *



CARRARA

NEW

Size	Thickness	Art.no
59x59 cm	10 mm	78930
69x69 cm	10 mm	78931
69x59 cm	10 mm	78932
110x69 cm	10 mm	78933 *
Ø 59 cm	10 mm	78934 *
Ø 69 cm	10 mm	78935



MARQUINA

NEW

Size	Thickness	Art.no
59x59 cm	10 mm	78960 *
69x69 cm	10 mm	78961
69x59 cm	10 mm	78962
110x69 cm	10 mm	78963
Ø 59 cm	10 mm	78964 *
Ø 69 cm	10 mm	78965 *



RAW CONCRETE

NEW

Size	Thickness	Art.no
59x59 cm	10 mm	78980 *
69x69 cm	10 mm	78981 *
69x59 cm	10 mm	78982
110x69 cm	10 mm	78983 *
Ø 59 cm	10 mm	78984 *
Ø 69 cm	10 mm	78985 *



OXIDE IRON

NEW

Size	Thickness	Art.no
59x59 cm	10 mm	78950 *
69x69 cm	10 mm	78951
69x59 cm	10 mm	78952
110x69 cm	10 mm	78953
Ø 59 cm	10 mm	78954
Ø 69 cm	10 mm	78955 *

Table bases

Manageable table bases for professional environments.

The range offers aluminium bases from Exxent and technology-leading steel constructions from Rockless Table, adapted for use in all weather conditions.

ROCKLESS TABLE



Self-stabilising table bases.

Patented pendulum design that automatically stabilises on all surfaces – indoors and outdoors. Constructed from two steel profiles and one bolt. The base is easily attached to any table top to maintain the desired style in the restaurant or bar. Fits all table tops in Exxent's range. Available in black powder-coated or galvanised steel.



Size: H72 x W64 cm
Max.table top: 60x70, Ø 80 cm
Max.load: 25 kg
Art.no: 78760 - **NEW**



Size: H72 x W64 cm
Max.table top: 60x70, Ø 80 cm
Max.load: 25 kg
Art.no: 78761 - **NEW**



Size: H72 x W74 cm
Max.table top: 70x70, Ø 90 cm
Max.load: 25 kg
Art.no: 78762 - **NEW**



Size: H72 x W74 cm
Max.table top: 70x70, Ø 90 cm
Max.load: 25 kg
Art.no: 78763 - **NEW**



Size: H90 x W64 cm
Max.table top: 70x70, Ø 90 cm
Max.load: 25 kg
Art.no: 78764 - **NEW**



Size: H108 x W64 cm
Max.table top: 70x70, Ø 90 cm
Max.load: 25 kg
Art.no: 78765 - **NEW**



Size: H72 x W57 cm
Max.table top: 110/120x70/80 cm
Max.load: 25 kg
Art.no: 78766 - **NEW**



Simple 4-step assembly – with only two steel profiles and one bolt.



1. Lay the base on its side.



2. Insert the inner tube into the outer tube and align the bolt holes.



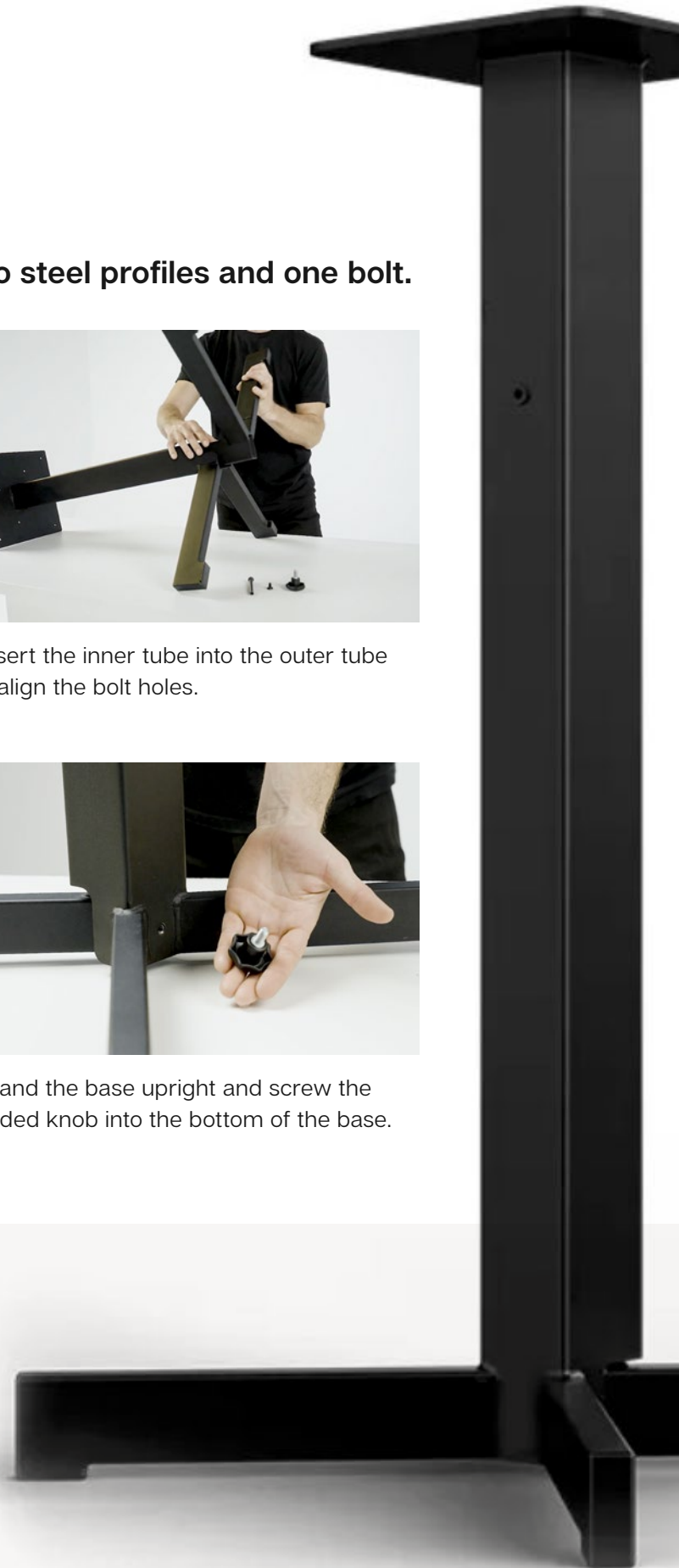
3. Insert the bolt through both tubes. Attach the small part of the bolt on the opposite side and tighten both ends using Allen keys.



4. Stand the base upright and screw the included knob into the bottom of the base.

What is the knob on the base used for?

The knob is used to control the self-stabilising function. In the unlocked position, the table legs automatically adapt to the surface. The locked position is used to fix the position after the table has been placed.



MADRID

Elegant table base for an authentic bistro feel.

The Madrid series, inspired by classic Rococo, is manufactured from cast aluminium and is available in three different designs. Its robust and weather-resistant construction makes it an excellent choice for both indoor and outdoor environments.



Colour: Antique brass
Size: H72 ± cm
Max.load: 10 kg
Feet: M10 threading
Art.no: 78589



Colour: Black
Size: H72 ± cm
Max.load: 10 kg
Feet: M10 threading
Art.no: 78471



Colour: Black
Size: H110 ± cm
Max.load: 10 kg
Feet: M10 threading
Art.no: 78590

GRANADA



EXTRA WEIGHT

Stylish design meets high functionality.

Granada combines stylish design with high functionality, making it ideal for both indoor and outdoor environments. Manufactured from durable cast aluminium and finished with a powder-coated black surface.

Below: Table top Factory 78688, sold separately.

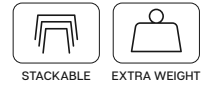


Colour: Black
Size: H72 ± cm
Max.load: 20 kg
Incl: 4 kg extra weight
Art.no: 78911



Colour: Black
Size: H72 ± cm
Max.load: 30 kg
Incl: 4 kg extra weight
Art.no: 78910

BARCELONA



Minimise storage space.

Folding bases make handling and storage of tables significantly easier. With a simple manoeuvre, the table top folds down along the side of the base, creating entirely new storage possibilities. Manufactured in powder-coated aluminium.



Colour: Black
 Size: H72 ± cm
 Max.load: 10 kg
 Incl: 3 kg extra weight
 Feet: M8 threading
 Art.no: 78624



Colour: Black
 Size: H72 ± cm
 Max.load: 25 kg
 Incl: 4 kg extra weight
 Feet: M8 threading
 Art.no: 78625



Eliminate wobbling tables with adjustable feet.

Adjust the table to the ground surface with a simple press on the top. Compatible with all Exxent bases and stabilises irregularities by up to 6 mm.



M8
 Set of 4 st
 Art.no: 78424

Please note
 Not suitable for bases:
 78589, 78471, 78590.

M10
 Set of 4 st
 Art.no: 78424-10

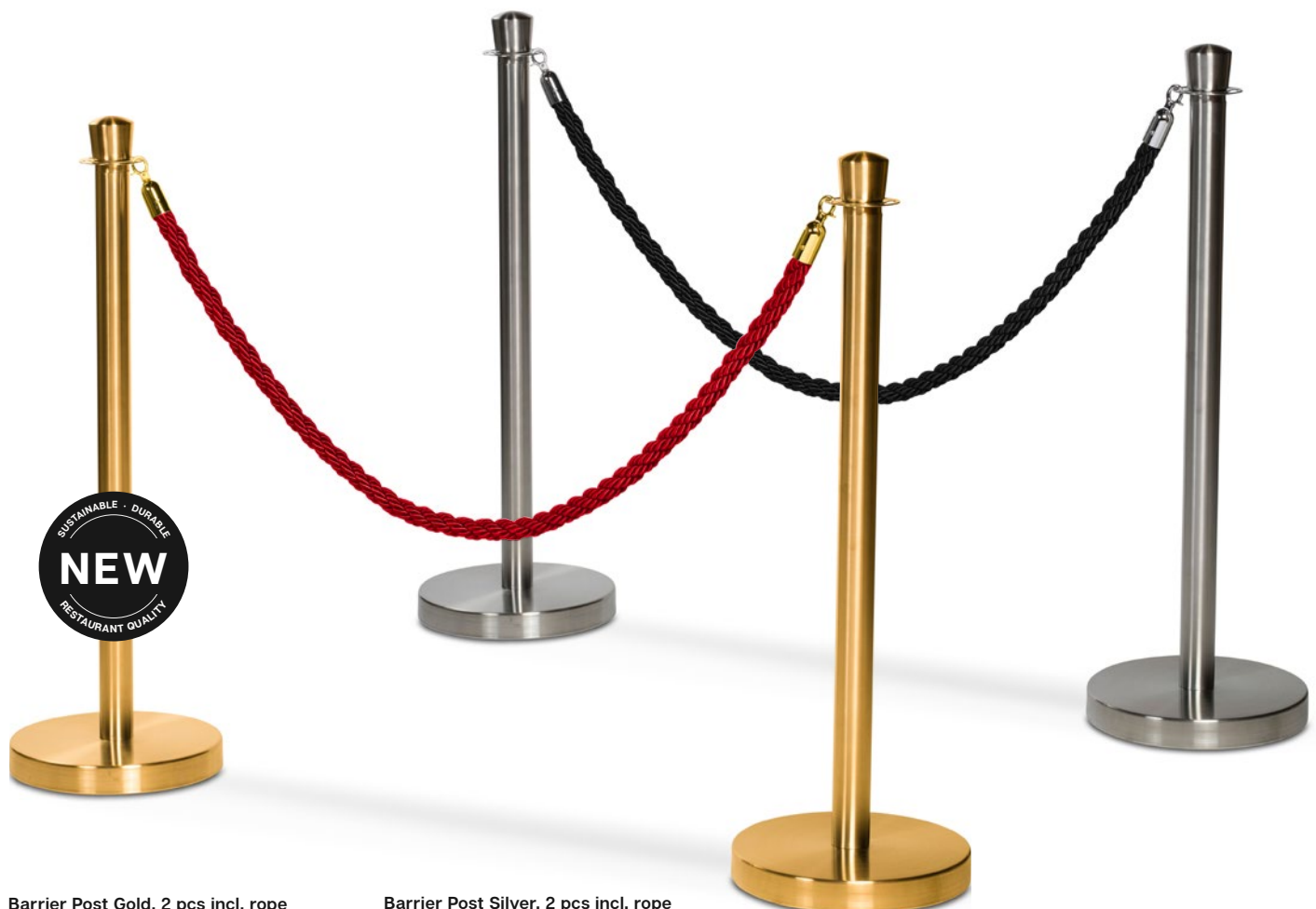
Please note
 Suitable for bases:
 78589, 78471, 78590.



Entrance equipment

Clear and flexible demarcation.

Define areas in an organised manner. Barrier posts are a practical solution for managing foot traffic and creating order in various environments.



Barrier Post Gold, 2 pcs incl. rope

Colour: Gold | Red
Size: H97 x B32 cm
Art.no: 78700 - **NEW**

Barrier Post Silver, 2 pcs incl. rope

Colour: Silver | Black
Size: H97 x B32 cm
Art.no: 78597

Adapt queue posts as needed.

Complete the queue posts with ropes in various colours. The ropes are delivered with hooks in either silver or gold to match the design of the posts and provide the desired finish.

Length: 150 cm, Width: 3,20 cm



Rope: Black
Hook: Silver
Art.no: 78598



Rope: Black
Hook: Gold
Art.no: 78705
NEW



Rope: Beige
Hook: Silver
Art.no: 78704
NEW



Rope: Beige
Hook: Gold
Art.no: 78709
NEW



Rope: Red
Hook: Silver
Art.no: 78703
NEW



Rope: Red
Hook: Gold
Art.no: 78708
NEW



Rope: Blue
Hook: Silver
Art.no: 78702
NEW



Rope: Blue
Hook: Gold
Art.no: 78707
NEW



Rope: Gold
Hook: Silver
Art.no: 78701
NEW



Rope: Gold
Hook: Gold
Art.no: 78706
NEW





exxent

Exxent AB
Galvaniseringsgatan 5
41707 Gothenburg
Tel: +46 31 50 67 00
info@exxent.com